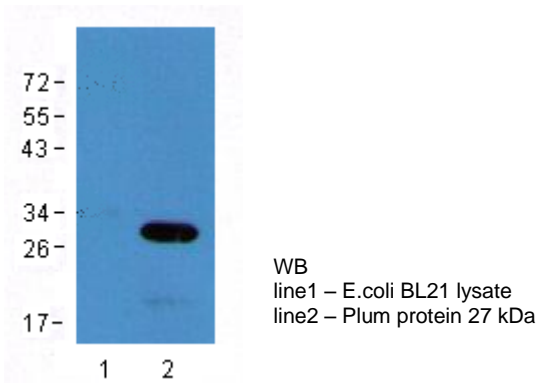


## anti – Plum protein

Rabbit polyclonal antibody

<b>LOT</b>	R-105-AI-01
<b>Form</b>	Protein A purified rabbit polyclonal antibody
<b>Immunogen</b>	E.coli recombinant protein
<b>Storage buffer</b>	PBS + 0,1% NaN <sub>3</sub>
<b>Amount</b>	1 mg
<b>Concentration</b>	1 mg/ml
<b>Volume</b>	1 ml / vial
<b>Specificity tested</b>	WB 1:2000 – 1:5000, ELISA 1:1000 – 1:5000 (working dilution should be determined for each specific application)



**For research and manufacturing only, not for use in diagnostic applications.**

**Storage conditions:** Long term storage at -20°C. Apronex guarantees optimal performance of this product for 12 months after date of delivery. Avoid freeze / thaw cycles.

**Country of origin:** Czech Republic

Apronex does not guarantee that the product can be used for special application. Apronex warrants that its products conform to the information contained in this Data Sheet.

This lot has been reviewed by Quality Assurance in compliance with requirements of Apronex's Quality System.

\_\_\_\_\_  
Director of Quality

\_\_\_\_\_  
Date